

Model	Produced	Model Years	Serial Numbers	Type Certificate Number	FAA Registered
35	1950	1947-1948	D-1 through D-1500	A-777	273
A35	701	1949	D-1501 through D-2200, D-15001	A-777	193
B35	480	1950	D-2001 through D-2680	A-777	135
C35	713	1951-1952	D-2681 through D-3400 except D-3293	A-777	253
D35	208	1951	D-3401 through D-3699	A-777	143
E35	301	1954	D-3703, D-3699 through D-3999	A-777	139
F35	392	1956	D-3999 through D-4301 except D-4370	A-777	188
G35	475	1955	D-4370, D-4392 through D-4895, D-16020	A-777	223
H35	464	1957	D-4896 through D-5330 except D-5292	3A15	219
I35	396	1959	D-5331 through D-5729	3A15	221
K35	436	1959	D-6726 through D-6161	3A15	237
M35	400	1960	D-6162 through D-6561	3A15	242
N35	292	1961	D-6562 through D-6961	3A15	192
P35	467	1962-1963	D-6962 through D-7359 except D-7140	3A15	318
S35	587	1964-1965	D-7140, D-7310 through D-7771 except D-7859	3A15	470
V35	522	1966-1967	D-7772 through D-8099	3A15	423
V35A	470	1968-1969	D-8099 through D-9068	3A15	321
V35B	1324	1970-1982	D-9069 through D-1403	3A15	915
V35-C	233	1960	CD-1 through CD-224, CD-203, CD-234, CD-241, CD-246 through CD-250	3A15	132
V35A13	154	1961	CD-225 through CD-232, CD-236, CD-237 through CD-240, CD-242 through CD-245, CD-247 through CD-267	3A15	86
V35B13	476	1970	CD-268 through CD-313	3A15	291
V35C13	305	1965-1967	CD-314 through CD-118	3A15	185
V35C13A	374	1966-1967	CE-1 through CE-173	3A15	114
E33	116	1968-1969	CE-119 through CE-124	3A15	62
E33A	84	1969-1969	CE-180 through CE-289 except those sharing E33C serial numbers C.J.1 through C.J.25	3A15	61
E33C	25	1969-1969	C.J.1 through C.J.25	3A15	20
F33	20	1970	CE-290 through CE-1254	3A15	14
F33A	150	1970-1994	CE-290 through CE-1731	3A15	981
F33C	88	1970, 1973-1976, 1986-1987	CF-28 through CF-114	3A15	17
G33	80	1972-1973	CD-1255 through CD-1304	3A15	41
H33	184	1968-1969	E-1 through E-184	3A15	120
I33A48	27	1969-1970	1624E-89-2004 through 162706, TH-1041 through TH-1048	3A15	2362
A36TC	241	1970-2005	E-185 through E-359 except E-3591	DA15	589
A36TC	27	1973-1981	EA-1 through EA-272 except EA-242	3A15	173
B36TC	423	1982-2002	EA-243, EA-171 through EA-499	3A15	3355
G36	526	2006-present	E-3610, E-3636 through E-4166, After reuse E-4147 through E-6161	3A15	371
H36	301	1959-1959	TD-2 through TD-302	3A15	96
I36	150	1960	TD-303 through TD-721	3A15	54
B35A	81	1961-1962	TD-453 through TD-533	3A15	32
D35A	174	1963-1967	TD-534 through TD-707	3A15	74
I36	14	1968	TD-708 through TD-721	3A15	6
H35-35	190	1961	TC-1 through TC-190	3A15	53
H35-35S	301	1962-1963	TC-191 through TC-501 except TC-350 and TC-371	3A15	89
H35-35S	1994	1964-1965	TC-371, TC-502 through TC-2455, T-524, TF-1 through TF-70	3A15	959
H35-35S	451	1966-1967	TC-360, TE-1 through TE-461	3A15	160
H35	316	1969-1969	TE-462 through TE-787	3A15	103
E35	434	1970-1982	TE-788 through TE-1201	3A15	215
S35TC	82	1987-1989	TH-2 through TH-83	3A15	37
A36TC	11	1970-1971	TH-84 through TH-84	3A15	3
S8	2124	1970-2005	TH-1 through TH-2124	3A15	918
S8TC	151	1976-1984	TK-1 through TK-151	A23CE	80
S8P	497	1976-1985	T-1 through T-497	A23CE	298
G58	417	2006-present	TH-2125 through TH-2536, After reuse TH-4537 through TH-2542	3A15	190
Totals	26159				13770

**Notes**

FAA registered as of December 5, 2024

13 1947-1948 35s were rebuilt by Beech as 35R models in 1951. The 35Rs received revised serial numbers consisting of their original serial number with an "R" suffix in the order they were rebuilt as follows:

D-2581 D-3R2 D-721R3 D-838R4 D-588R5 D-635R6 D-532R7

As of December 3, 2024 2 35s are among the Model 35s on the FAA registry.

G35 D-4758 was modified as the Beech Travel Air prototype and redesignated TD-1. After certification TD-1 was returned to G35 configuration and redesignated D-15002

E35 serial number D-7859 became the G35 prototype, which did not enter production

F35 35s were modified during production by STC to become V35TCs. See the serial number list below.

H35 35As were modified during production by STC to become V35A TCs. See the serial number list below.

F 1950 models V35As were modified during production by STC to become V35B TCs. See the serial number list below.

H 35B Barons D-5796 was taken off the production line and modified for Federal testing. The airplane logbook notes transfer to Experimental Flight Test category in May 1969 and contains an entry "First Flight as CD-7" on July 7, 1959. After extensive testing in 1960 it was returned to K35 standard configuration including engine and propeller and transferred to the Beech Enterprises Flying Club.

25 E33As were modified in production to E33Cs and carried both a CE-XXX and C.J. serial number, listed below.

6 E33As were modified to US Air Force Pave Eagle airplanes as listed below.

TD-1 the Travel Air prototype, was modified from G36 D-4758. After certification TD-1 was returned to G35 configuration and redesignated D-15002.

**Propaganda labels**

Includes approximately 20 ABAT airline trainers built 1990-1992 for Lufthansa and KLM to meet European noise requirements

Propagator government limited to 2500 ppm maximum and large external muffler during the 2006 maximum horsepower

As of year end 2024, Production ceased 4Q 2020 and resumed 4Q 2022. Factory ships summer 2024.

TD-1 the Travel Air prototype, was modified from G36 D-4758. After certification TD-1 was returned to G35 configuration and redesignated D-15002.

T-42As are B55s with TF-series serial numbers

TC-360 uses the prototype G35

TD-1 the prototype, was G35 serial number TE-60 modified for certification.

As of year end 2024, Production ceased 4Q 2020 and resumed 4Q 2022. Factory ships summer 2024.

Total Produced	Percentage of Aircraft Produced that are Still Registered	Total US Registrations (December 2024)
31,869s	47%	15,165s
33,340s	53%	17,933
39,469s	62%	24,605s
<b>All single engine</b>	<b>56%</b>	<b>All single engine 10,535</b>
55	44%	55
3894	44%	1839
58	47%	1486
<b>All multiseater</b>	<b>44%</b>	<b>All multiseater 3417</b>

**V35TC**

D-8036	D-8190	D-8274	D-8385	D-8496
D-8048	D-8194	D-8279	D-8393	D-8500
D-8057	D-8199	D-8286	D-8400	D-8505
D-8064	D-8205	D-8294	D-8407	D-8509
D-8072	D-8210	D-8300	D-8419	D-8514
D-8077	D-8217	D-8307	D-8427	D-8518
D-8090	D-8225	D-8316	D-8432	D-8526
D-8127	D-8229	D-8323	D-8438	D-8530
D-8133	D-8234	D-8328	D-8447	D-8533
D-8140	D-8239	D-8336	D-8456	D-8538
D-8146	D-8242	D-8342	D-8465	D-8552
D-8153	D-8245	D-8353	D-8470	D-8560
D-8176	D-8249	D-8359	D-8475	D-8567
D-8181	D-8255	D-8366	D-8481	D-8577
D-8184	D-8261	D-8373	D-8485	D-8586
D-8188	D-8267	D-8379	D-8490	

**V35A-TC**

D-8606	D-8705	D-8829	D-8901	D-8992
D-8615	D-8715	D-8835	D-8911	D-9001
D-8625	D-8720	D-8842	D-8921	D-9008
D-8628	D-8744	D-8849	D-8930	D-9019
D-8638	D-8763	D-8855	D-8940	D-9027
D-8652	D-8777	D-8861	D-8951	D-9039
D-8662	D-8790	D-8868	D-8961	D-9048
D-8673	D-8810	D-8875	D-8973	D-9055
D-8681	D-8823	D-8887	D-8982	D-9063

**V35B-TC**

D-9070	D-9107	D-9180
D-9078	D-9131	
D-9088	D-9154	

**E33Cs carrying both a CE-XXX and C.J. XX serial number**

CE-238C-1	CE-240C-18	CE-252C-11	CE-261C-22
CE-237C-2	CE-244C-19	CE-253C-16	CE-262C-23
CE-238C-3	CE-245C-10	CE-254C-17	CE-263C-24
CE-238C-4	CE-246C-11	CE-255C-18	CE-264C-25
CE-240C-5	CE-247C-12	CE-257C-19	
CE-241C-6	CE-248C-13	CE-258C-20	
CE-243C-7	CE-251C-14	CE-266C-21	

**Prop-Optional Electronic Reconnaissance Aircraft**

E33As modified to USAF Pave Eagle (10U-22A)	Beech Model 1074	
Original s/n	USAF s/n	
CE-218	68-10501	Combat loss in Southeast Asia
CE-219	68-10502	Combat loss in Southeast Asia
CE-221	68-10533	
CE-222	68-10534	Returned to US, registered N83-475. Destroyed in crash in VA Oct 1984
CE-223	68-10536	
CE-224	68-10536	

**Changover from magnesium to aluminum**

**Alison/Flaps Elevator**

Year	G36	G58	Total
2015	23	18	41
2016	25	20	45
2017	19	23	38
2018	15	19	34
2019	7	16	22
2020	12	8	20
2021	0	0	0
2022	3	0	3
2023	5	5	10
2024	5	2	7
<b>Total</b>	<b>108</b>	<b>110</b>	<b>218</b>

**Pave Eagle II (10U-22B) based on Model 36 airframe** Beech Model 1070

69-7653	69-7654	Combat loss in Southeast Asia	70-1535
69-7655	69-7656	Combat loss in Southeast Asia	70-1537
69-7657	69-7658	Combat loss in Southeast Asia	70-1538
69-7659	69-7660	Combat loss in Southeast Asia	70-1539
69-7661	69-7662	Combat loss in Southeast Asia	70-1540
69-7663	69-7664	Combat loss in Southeast Asia	70-1541
69-7665	69-7666	Combat loss in Southeast Asia	70-1542
69-7667	69-7668	Combat loss in Southeast Asia	70-1543
69-7669	69-7670	Combat loss in Southeast Asia	70-1544
69-7671	69-7672	Combat loss in Southeast Asia	70-1545
69-7673	69-7674	Combat loss in Southeast Asia	70-1546
69-7675	69-7676	Combat loss in Southeast Asia	70-1547
69-7677	69-7678	Combat loss in Southeast Asia	70-1548

**Total Produced**

Single engine	71%
Multiseater	29%

**Produced**

ABS Online Learning Center Models Groupings		Registered
E-Series	4864	E-Series 1517
O-470/D-470	3747	O-470/D-470 2189
520/650	8604	520/650 5784
G36	525	G36 371
36TC	694	36TC 460
95	720	95 262
N.A. Barons	5818	N.A. Barons 2547
G58	417	G58 190
98	93	98 40
SBPTC	648	SBPTC 378
<b>Total</b>	<b>26152</b>	<b>Total 19788</b>

**120204 OLC Model Groupings as a Percentage of the Current Fleet**

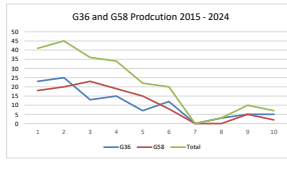
E-Series	11%
O-470/D-470	16%
520/650	42%
G36	3%
36TC	3%
95	2%
N.A. Barons	19%
G58	1%
98	0%
SBPTC	3%

**% of Produced**

33	12%
35	36%
36	24%
95	2%
14%	12%
56	0%
58	11%

**Single-Engine V-Tail vs. Straight Tail**

V-tails	49%
Straight Tails	51%



**120204 OLC Models as a Percentage of the Current Fleet**

E-Series	11%
O-470/D-470	16%
520/650	42%
G36	3%
36TC	3%
95	2%
N.A. Barons	19%
G58	1%
98	0%
SBPTC	3%

**% of Produced**

33	12%
35	36%
36	24%
95	2%
14%	12%
56	0%
58	11%

**Single-Engine V-Tail vs. Straight Tail**

V-tails	49%
Straight Tails	51%