



2017 ABS 50th ANNIVERSARY CONVENTION Fly-In Guide

The American Bonanza Society welcomes you to Wichita! This information is presented by the FAA's Wichita Air Traffic Control, the Wichita Airport Authority, the host airports and FBOs, and the American Bonanza Society to supplement your flight planning. The Wichita airspace can be very busy at times, and we are expecting a large turnout for the ABS Convention. **Please read this Guide carefully** and observe its suggestions for a safe and speedy arrival and departure from your Beechcraft's birthplace, The Air Capital: Wichita, Kansas.

General Information

- Air Traffic Control (ATC) arrival or departure reservations are **not** required.
- Almost all airplanes will be parked in grass. **Bring your own tiedown stakes and ropes.**
- There are **no parking or handling fees** at any of the ABS Convention host FBOs.
- ABS will provide **ground transportation** to and from Wichita Colonel James Jabara Airport and Stearman Field on Wednesday, September 20 through Sunday, September 24. Hotel shuttle service is available from Wichita Eisenhower Airport. Persons arriving or departing at any other time or from any other location are responsible for their own ground transportation. The bus schedule is printed at the end of this Guide.
- A very small number of **hangars** may be available. Contact the host FBOs directly if you wish to request a hangar. ABS is not involved in hangar reservations.
- This guide is for general ABS Convention information only. **Check traffic pattern and other information for all airports before arriving and departing.**

Airports

Colonel James Jabara Airport (KAAO)

KAAO is a nontowered airport just northeast of Wichita, just outside the Wichita Class C airspace, with a 6100-foot runway served by ILS, RNAV (GPS) and VOR approaches. Approximately 180 parking spots are available on grass and 20 on pavement. Midwest Corporate Aviation is the host FBO.

The Wichita airport Authority adds this additional guidance:

KAAO isn't a particularly heavy traffic airport, but experience has demonstrated that the surrounding airspace and traffic is "tight" and warrants visual and situational vigilance. This is created by McConnell AFB's long final/ILS approach on the west side of KAAO, Beech Field's long final/ILS approach on the east side of KAAO, and close proximity to the Wichita Class C airspace. The Col. James Jabara Airport Flight Planning PDF [page 4 of this Guide] does a good job of graphically showing this.

The Wichita Airport Authority's KAAO guide is also online at <http://tinyurl.com/KAAOplanning>.

Benton – Lloyd Stearman Field (1K1)

1K1 is a nontowered airport about five miles east of Jabara, with a 5100-foot runway served by RNAV (GPS) approaches. 100 to 150 parking spots are available along the parallel taxiway on firm grass, and on a parallel grass runway. Approximately 15 transient hangar spots are available. Contact Dwayne Clemens at Stearman Field, 316-648-0132, to make a hangar reservation.

Wichita Eisenhower National Airport (KICT)

Eisenhower National is the main commercial airport, and is the primary airport for the Wichita Class C airspace. Yingling Aviation is the host FBO. Approximately 30 parking spots are available on pavement. Additional parking may be available at other FBOs, but call ahead to the specific FBO to be certain.

NOTE: Beech Field (KBEC) is a public use airport, but all areas except the runway are the private property of Textron Aviation. **You are not permitted to use Beech Field** for the ABS Convention.

Traffic and Activity

There is significant general aviation traffic (primarily jet/turboprop) among the many airports in the Wichita area. An Alert Area over McConnell AFB also extends over KAAO and near 1K1. Extensive military flight training occurs in this Alert Area 24 hours a day, including heavy tankers, jet trainers and fighter aircraft.

Extensive Textron Aviation flight test and flying club traffic arrives and departs Beech Factory Airfield (KBEC) due east within one mile of the north and south ends of Runways 18/36. Aircraft remain at or below 2700 MSL in these corridors until five miles east of the airport. Straight-in arrivals/departures to KBEC extend to the east of Jabara Airport. Beech Tower publishes its hours of operation are Monday through Friday 0700-1730 local time. However, Beech Tower is frequently open at other times without notice, to support Textron Aviation flight test and company transportation aircraft.

There is a grass airstrip about three miles east of Jabara, between KAAO and Stearman Field, with frequent glider and ultralight traffic.

Arrivals and Departures

IFR

All airports: If arriving under IFR, follow normal IFR procedures. At KAAO and 1K1, cancel in the air if safely and legally possible to free up the airspace for the next pilot. If you must maintain IFR to landing, cancel IFR as soon as possible. Ground communication to Wichita Approach is available at KAAO. At 1K1 you must telephone ATC or the Flight Service Station to cancel.

Area traffic creates extensive delays receiving IFR departure clearances from Jabara and 1K1. If safely possible, plan to depart VFR and obtain your IFR clearance in the air. Because of traffic Wichita Approach may not be able to clear you before you are handed off to Kansas City Center about 20 miles from KICT, so ensure you can remain VFR at least that distance before you depart without a clearance.

VFR

All airports: Contact Wichita Approach Control on 126.7 (west) or 134.8 (east) within 20 miles of your destination airport. Remain clear of the Wichita Class C, McConnell AFB Class D and Beech Field Class D airspace unless authorized by Air Traffic Control.

KAAO:

For both arrival and departure, the Wichita Airport Authority recommends remaining at or below 2400 MSL within five miles of KAAO due to heavy military traffic at and above 3000 MSL in the area.

Arrival: Proceed to HANCE intersection (4.7 nm E of KAAO). From HANCE fly heading 262° to **cross Jabara midfield**, then turn **left for downwind to Rwy 36** or **right to downwind for Rwy 18**. Watch for traffic in and out of KBEC, including straight-in arrivals and departures that will cross your flight path. Watch for McConnell AFB traffic, which is generally at 3000 MSL until west of the KAAO extended runway centerline, then at or above 2600 MSL until south of Jabara. Watch for no-radio airplanes and gliders between HANCE and KAAO and in the area around Stearman Field.

Departure: Remain clear of the Class C, McConnell AFB Class D and Beech Field Class D airspace unless authorized by Air Traffic Control. Departing Rwy 36, visually clear for McConnell and KBEC traffic before turning and climbing on course. Departing Rwy 18, make immediate right turn onto a right downwind leg at 2200 MSL. Clear for McConnell and KBEC traffic before turning on course.

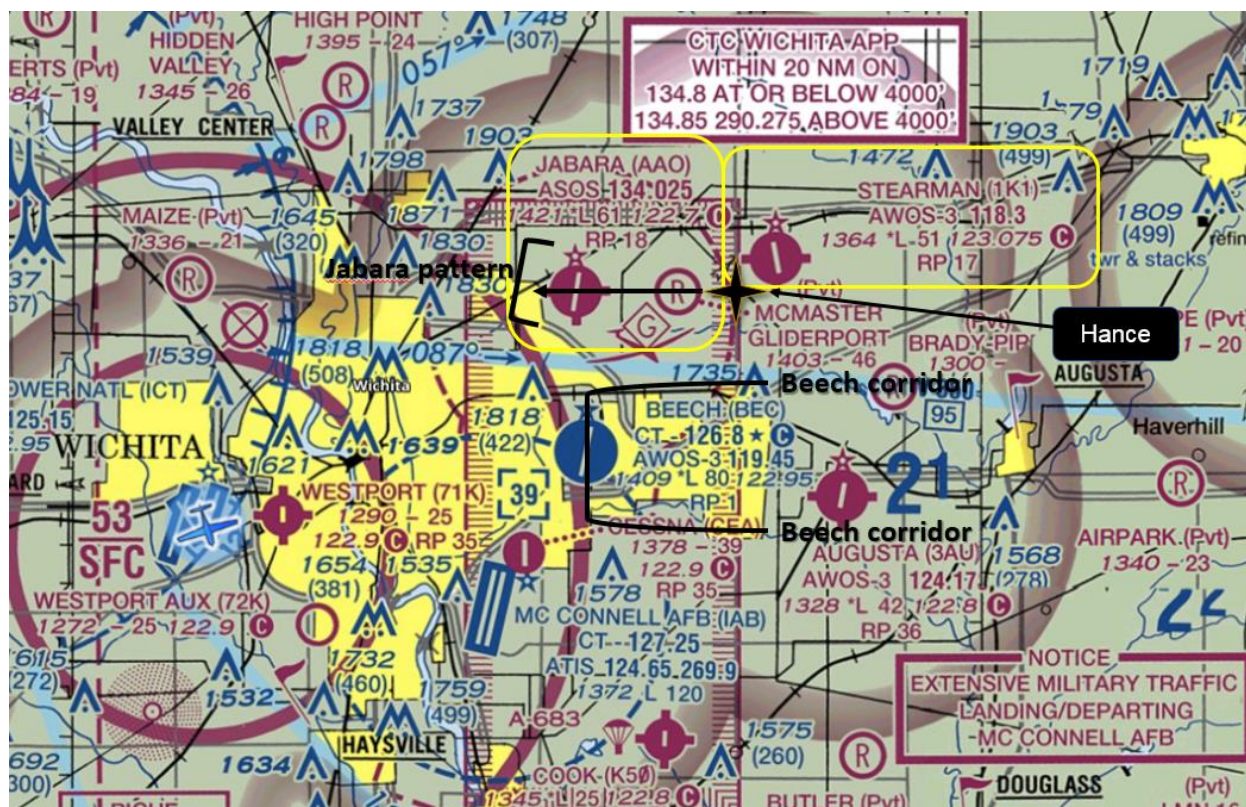
KICT and 1K1: Follow normal VFR arrival and departure procedures.

Parking, Rental Cars and Welcome Center

Jabara (KAAO): Volunteer marshalls will direct you to parking. Follow all instructions **Taxi very slowly in grass parking areas**. Some areas are uneven, and some will require your airplane to be towed in and out. Volunteers and FBO staff will transport you and your baggage to the ABS Welcome Center, where you'll meet the bus or reserved Enterprise rental car: 316-681-1000 and then hit *. Code XZKA016.

Stearman Field (1K1): Marshalls will help you find parking. Follow all instructions. Volunteers and airport staff will transport you and your baggage to the ABS Welcome Center, where you'll meet the bus or Enterprise rental car: 316-681-1000 and then hit *. Code XZKA016. On arrival, call Enterprise at 316-681-1000. They will pick you up at Stearman and take you to the rental office to get your car.

Wichita Eisenhower National (KICT): Follow normal transient aircraft procedures. Reserve a car from Enterprise at the airline terminal or by calling ahead to Yingling 316-942-6623 and then hit *. Code XZKA016. Specify whether you'll pick up the car at the airliner terminal or at Yingling Aviation.



Bus Transportation to/from the Convention Hotels

Arriving at KICT: Contact the hotel where you will be staying for its shuttle. Indicate whether you need picked up at Yingling or at the airline terminal.

Arriving at KAAO or 1K1: ABS-provided buses will run between Jabara and Stearman and all four Convention hotels on the schedule below. Buses will depart the airports on the half hour Wednesday through Friday, and on the hour Saturday. ABS will announce the Sunday schedule at the Convention.

Wednesday, Sept. 20	12:00 pm – 6:00 pm
Thursday, Sept. 21	8:00 am – 6:00 pm
Friday, Sept. 22	8:00 am – 3:30 pm
Saturday, Sept. 23	8:00 am – 4:00 pm
Sunday, Sept. 24	5:30 am – 11:30 am

Fuel

Jabara (KAAO): Midwest Corporate Aviation (MCA) staff will take fuel orders upon your arrival. The AIRNAV 100LL low-lead price on 8/24/2017 was \$5.36/gallon. MCA will announce a fuel discount price.

Stearman Field (1K1): The FBO staff will take fuel orders upon your arrival. The AIRNAV 100LL low-lead price on 8/24/2017 was \$4.25/gallon. Stearman will announce a fuel discount price. Alternately, self-serve fuel is available on the south edge of the transient ramp.

Wichita Eisenhower National (KICT): Use normal transient fueling procedures with Yingling Aviation. The AIRNAV 100LL low-lead price on 8/24/2017 was \$5.35/gallon. Yingling will announce a fuel discount price. Alternately, self-serve fuel is available on the south edge of the Yingling Aviation ramp.

Emergency repair services are available at all three airports. Contact the host FBO if you need emergency aircraft repairs. Talk with the ABS Technical Advisors if you need additional information.

